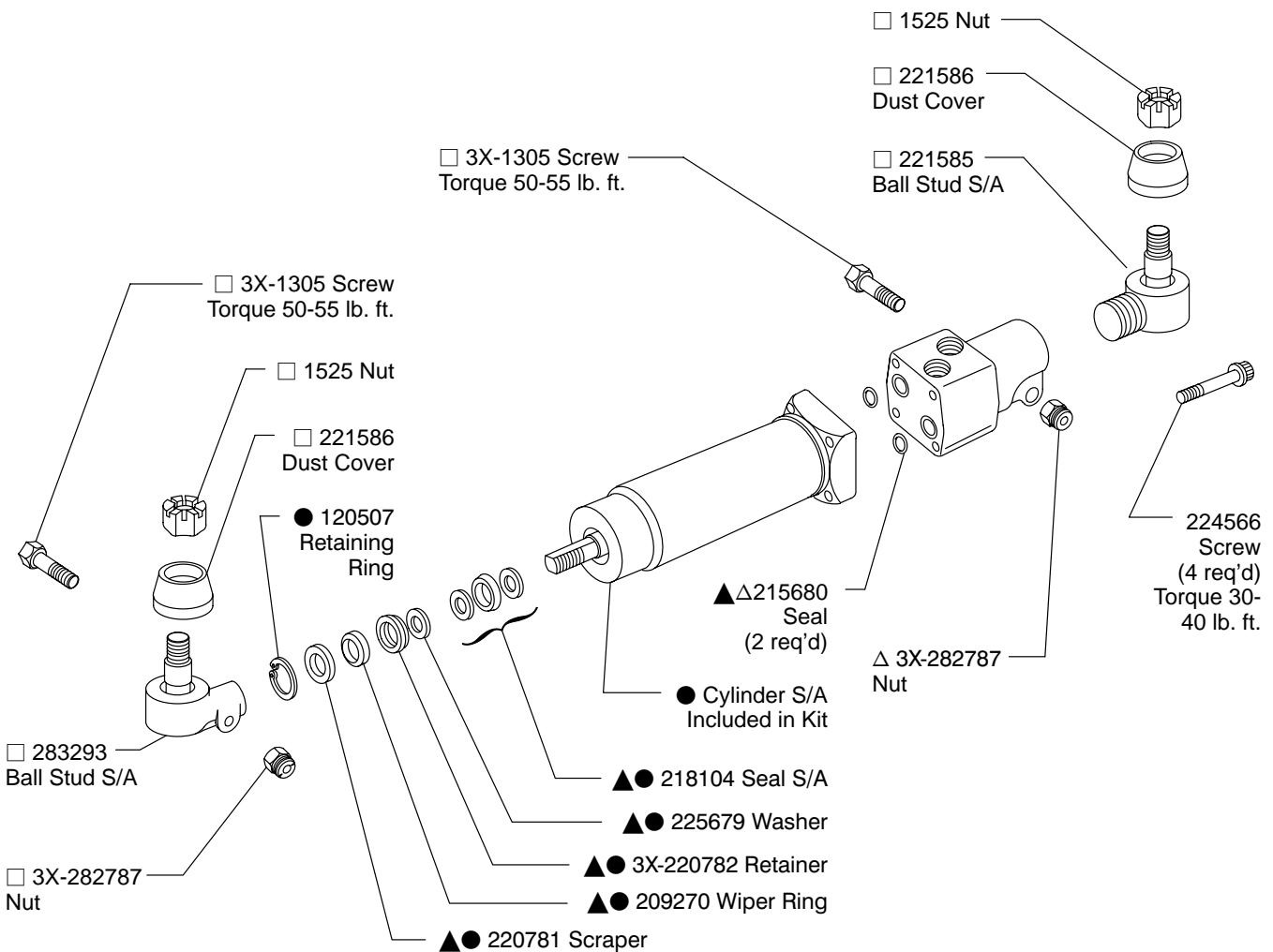
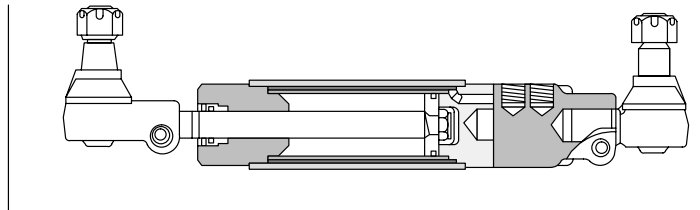


Vickers® Steering



Steering Cylinder

SC26-*****-11



Cylinder ● S/A Kit	Model	Stroke (Inches)
936915	SC12-06****-11	6 3/32
936916	SC12-08****-11	8 3/32
936917	SC12-10****-11	10 3/32
936918	SC12-12****-11	12 3/32

▲ Service all units with F3 Seal Kit 922626

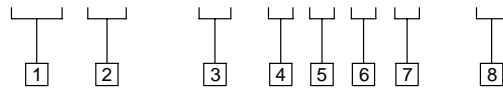
△ Included in 922941 End Cap Kit

□ Included in 922943 Ball Stud Kit

○ Included in 922686 Ball Stud Kit

Model Code

SC 12 - ** * * * * - 11



1 Steering Cylinder

2 Cylinder Bore Diameter

(1/8 inch increments)
12 - 1.50 inch diameter

3 Stroke
(Inches)

06 - 6 3/32 inch
08 - 8 3/32 inch
10 - 10 3/32 inch
12 - 12 3/32 inch

4 Rod End Mounting

N - No attachments
B - Horizontal ball stud S/A -
Nylon seat

5 End Cap

N - No end cap
1 - 20 USgpm
1.125-12 UNF female thread

6 Head End Mounting

N - No attachments
B - Horizontal ball stud S/A -
Nylon seat

7 Head End Mounting Position

N - No position or attachment
W - Opposite port connections
X - 90° counterclockwise from
port connections
Y - In line with port connections
Z - 90° clockwise from port
connections

8 Design

For satisfactory service life of these components, use full flow filtration to provide fluid which meets ISO cleanliness code 20/18/15 or cleaner. Selections from Eaton OFP, OFR and OFRS filter series are recommended.

Printed in U.S.A.