

Service Data

Vickers®

Piston Pumps



Fixed Inline Piston Pumps

M-PFB10-30/31

M-PFB15-30

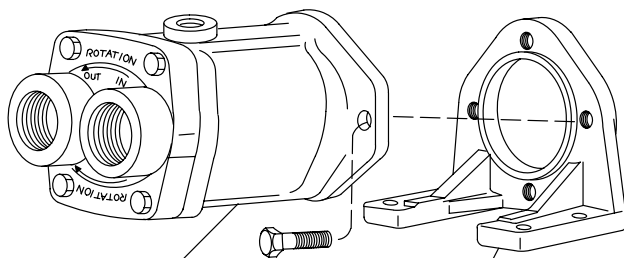


Revised 11/01/85

M-2202-S

Foot Mounting Bracket

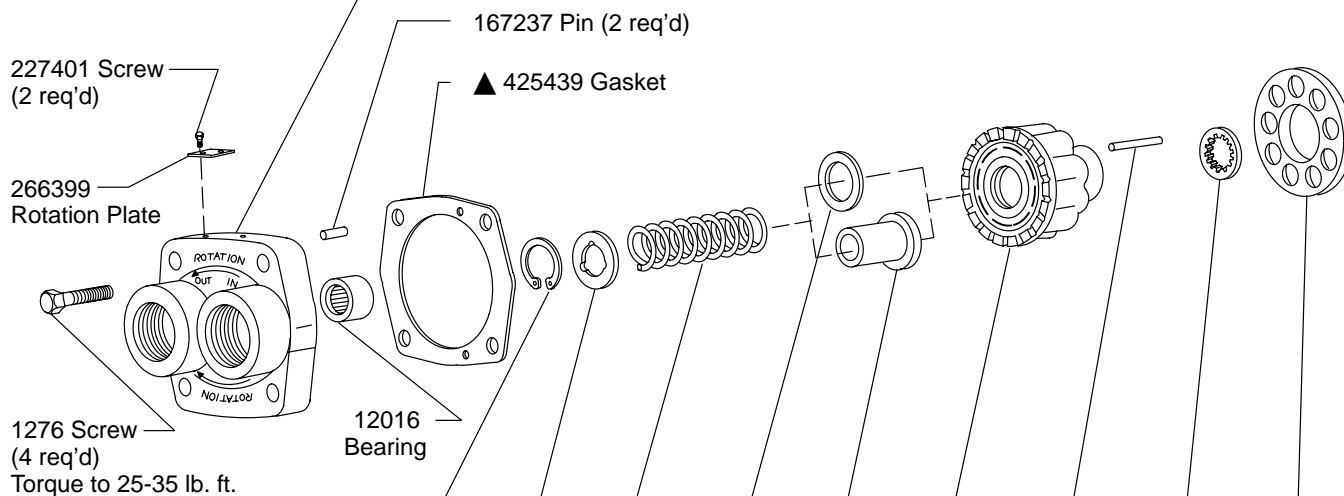
Model M-PFB*-F**-30



199740 Screw
(2 req'd)

Mounting Kit FB-B-10
(Includes Screws)

Model	Valve Plate Sub-Assy. Includes 12016 Bearing	Valve Plate
M-PFB10-R*-30/31	942048	
M-PFB10-L*-30/31	942049	
M-PFB15-R*-30		318338
M-PFB-10-U-31	942050	



Model Designation	Retaining Ring	Lift Limiter	Spring	Thrust Washer	Spring Guide	Cylinder Block	Pin (3 req'd)	Spherical Washer	Shoe Plate
M-PFB-**-30/31	93509	245223	247294	241954		321703	248811	423324	275961
M-PFB15-**-30					306868	260860			

These parts are serviced in Rotating Group KitΔ

Include complete model number on all parts orders.

▲ Included in 919521
Seal Kit.

Model Designation	Shaft	Key
M-PFB*-*-30/31	261552	22971
M-PFB*-*-G-30/31	295729	—
M-PFB*-*-Y-30/31	270370	58303

284397 Bearing

120428 Retaining Ring

119982 Retaining Ring

274382 Seal Retainer

227401 Screw (2 req'd)

263129 Nameplate

227401 Screw (2 req'd)

164432 Plate

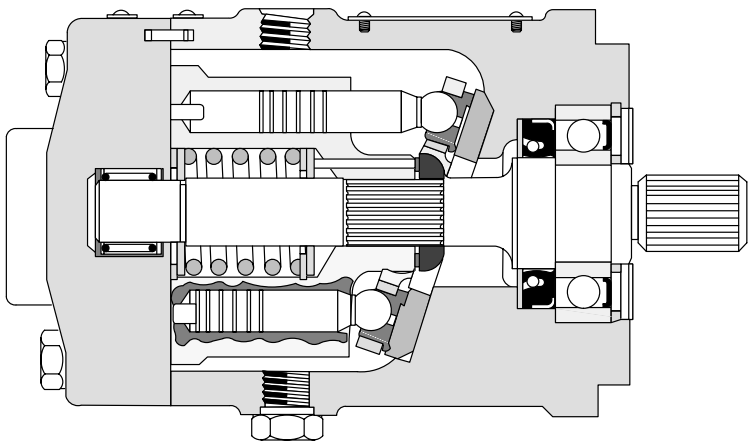
321621 Housing

▲ 343573 Shaft Seal

▲ 263497 "O" Ring

186580 Plug

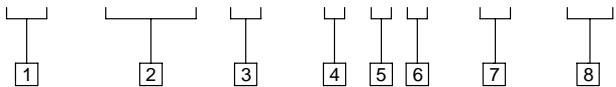
Model Designation	Piston Kit (9 pistons)	Swash Plate	Rotating Group Kit
M-PFB**-30/31	942047	239077	938272
M-PFB15**-30	941887		923945
These parts are serviced in Rotating Group KitΔ			



See Service Manual M-2200-S for maintenance information

Model Code

M - PFB ** - (*) * * - 3* - ***



1 Mobile Application	5 Rotation (Viewed from Shaft End) R - Right hand L - Left hand U - Either direction	7 Pump Design Number -30/-31
2 Model Series PFB - Pump, fixed displacement, inline piston unit	6 Shaft Type G - Splined	8 Special Features
3 Flow Rating @1800 RPM 10 - 10 USgpm 15 - 15 USgpm		
4 Mounting F - Foot bracket (Omit for flange)		

For satisfactory service life of these components in industrial applications, use full flow filtration to provide fluid which meets ISO cleanliness code 18/15 or cleaner. Selections from Eaton OFP, OFR, and OFRS series are recommended.