

Service Data

Vickers®

Piston Motors



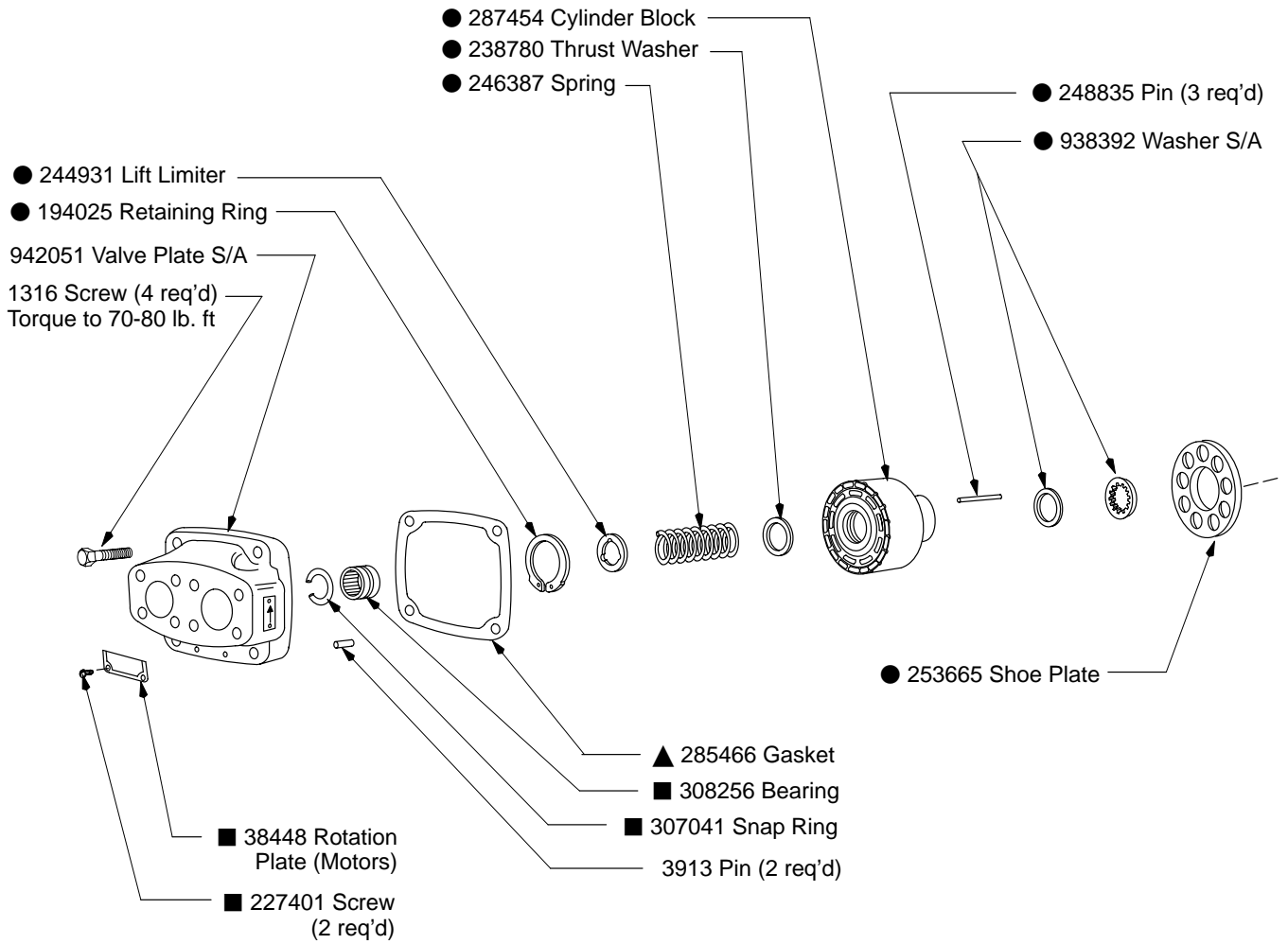
29 USgpm Fixed Displacement Inline Piston Motor

MFB29-(F)UF- 20



Revised 11-01-85

I-3741-S

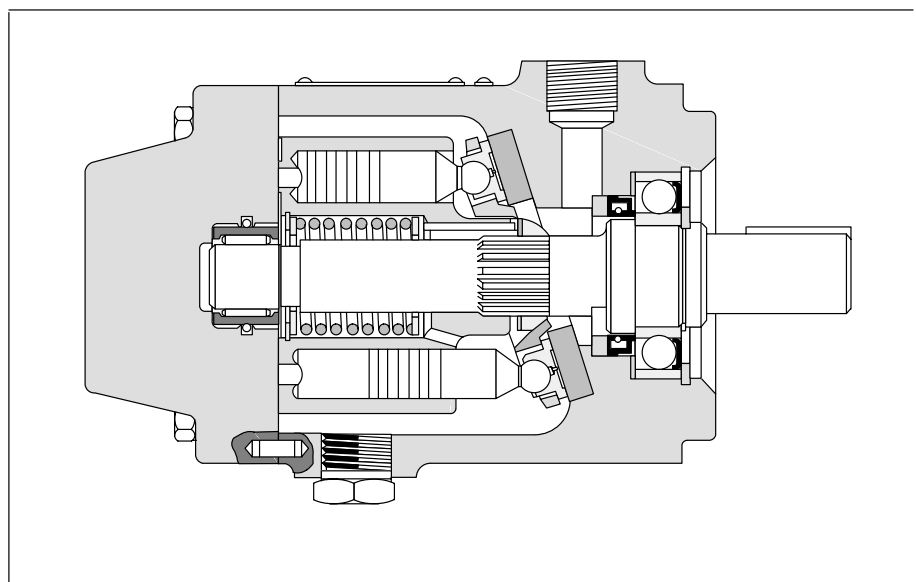
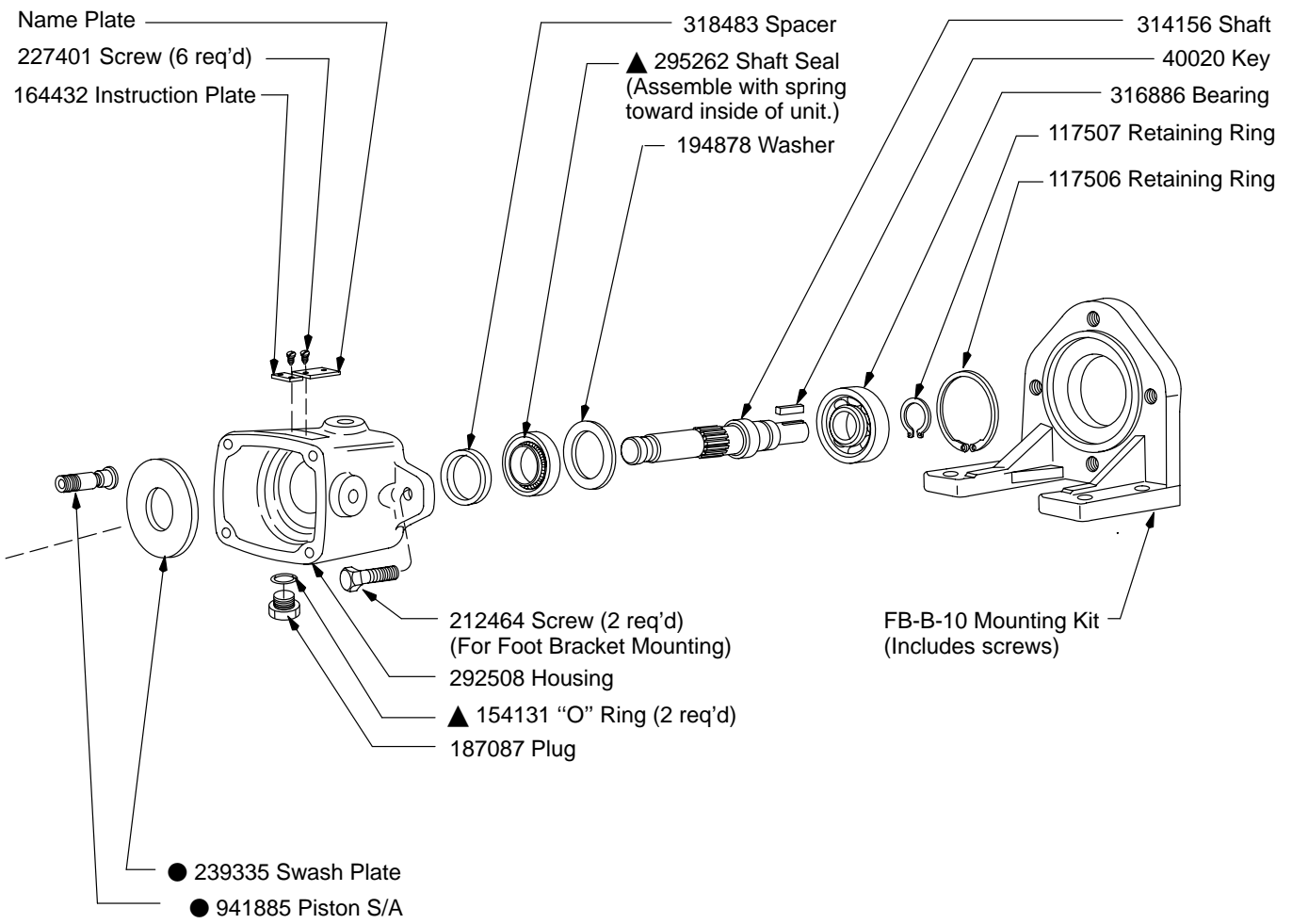


■ Included in
 Valve Plate S/A

▲ Included in
 919242 Seal Kit

● Included in 923001
 Rotating Group Kit

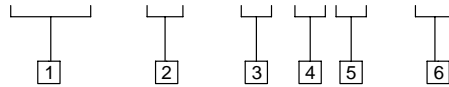
F3 Equivalent
 919313 Seal Kit



Model Code

Model Code

MFB - 29 - (F) * F - 20



1 Model Series

Fixed displacement piston motor, in-line design

3 Mounting

F - Foot bracket
(Omit when not included.)

5 Flange Connection

6 Design

2 Rated Displacement @ 1800 RPM

29 - 29 USgpm

4 Shaft Rotation

(Viewed from shaft end)
U - Either direction (motors)

For satisfactory service life of these components, use full flow filtration to provide fluid which meets ISO cleanliness code 16/13 or cleaner. Selections from pressure, return, and in-line filter series are recommended.