

Service Data

Vickers®

Piston Pumps



20 & 29 GPM Variable Inline Piston Pumps

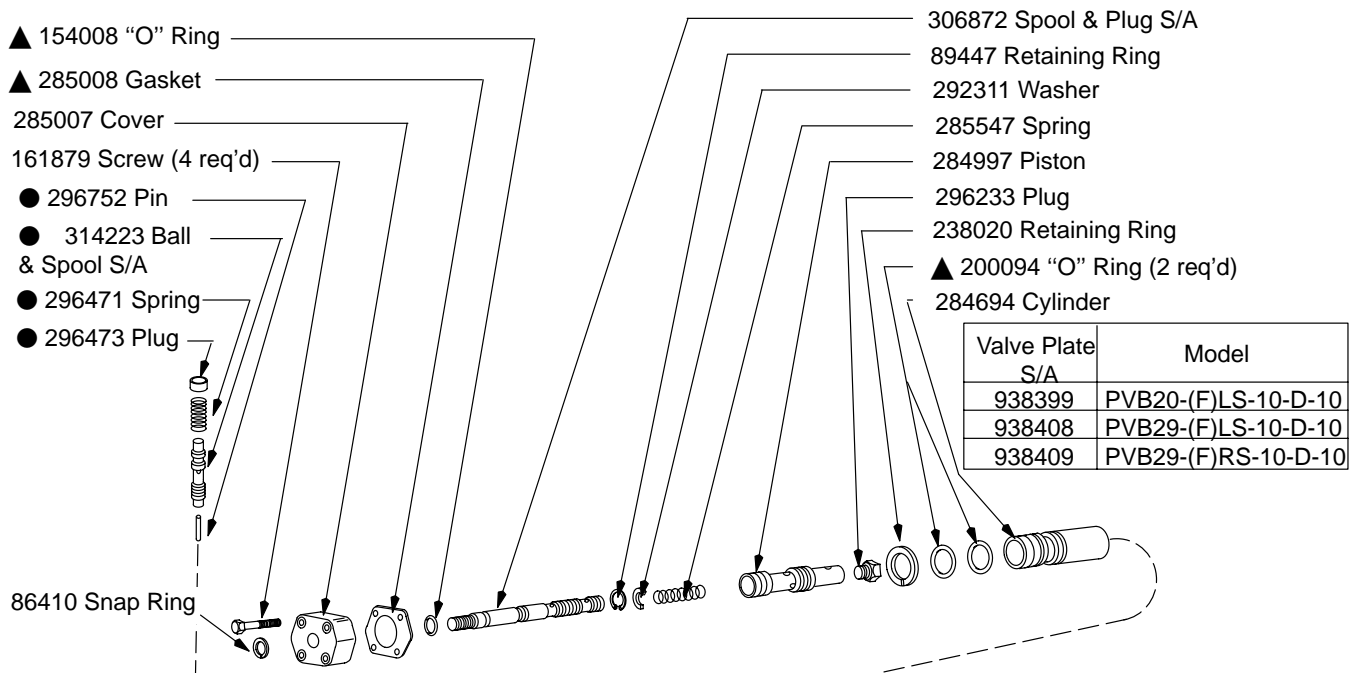
PVB20-(F)*S-10-D-10

PVB29-(F)*S-10-D-10

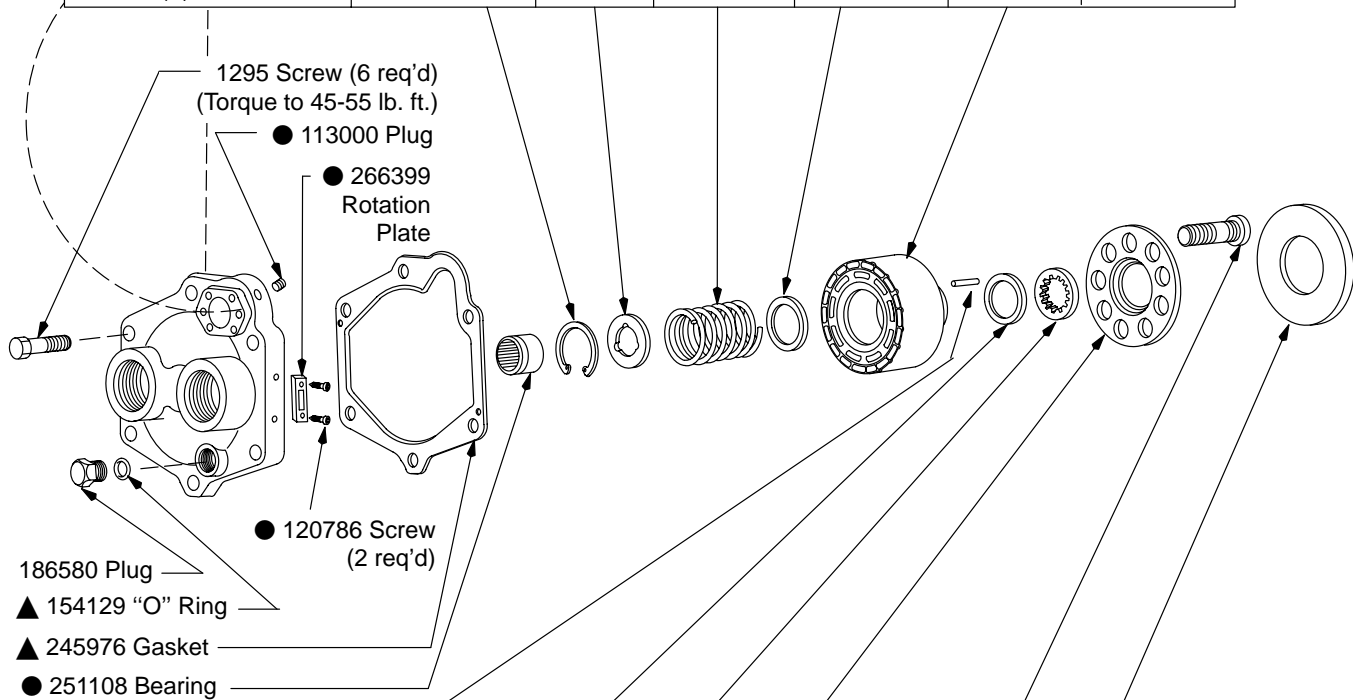


Revised 12-1-87

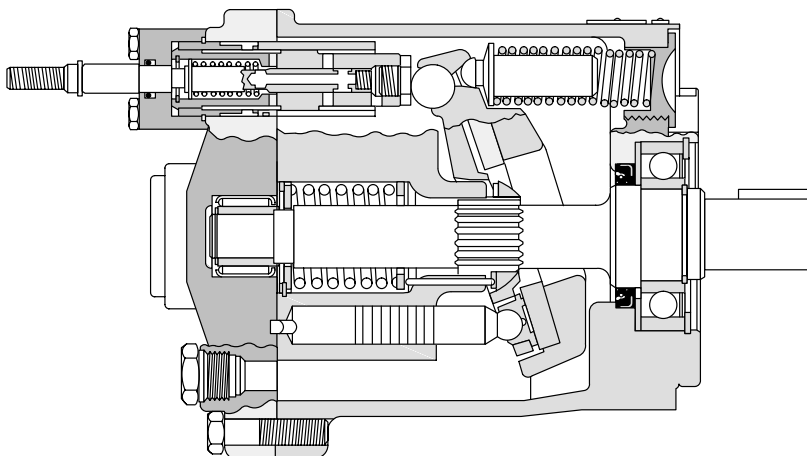
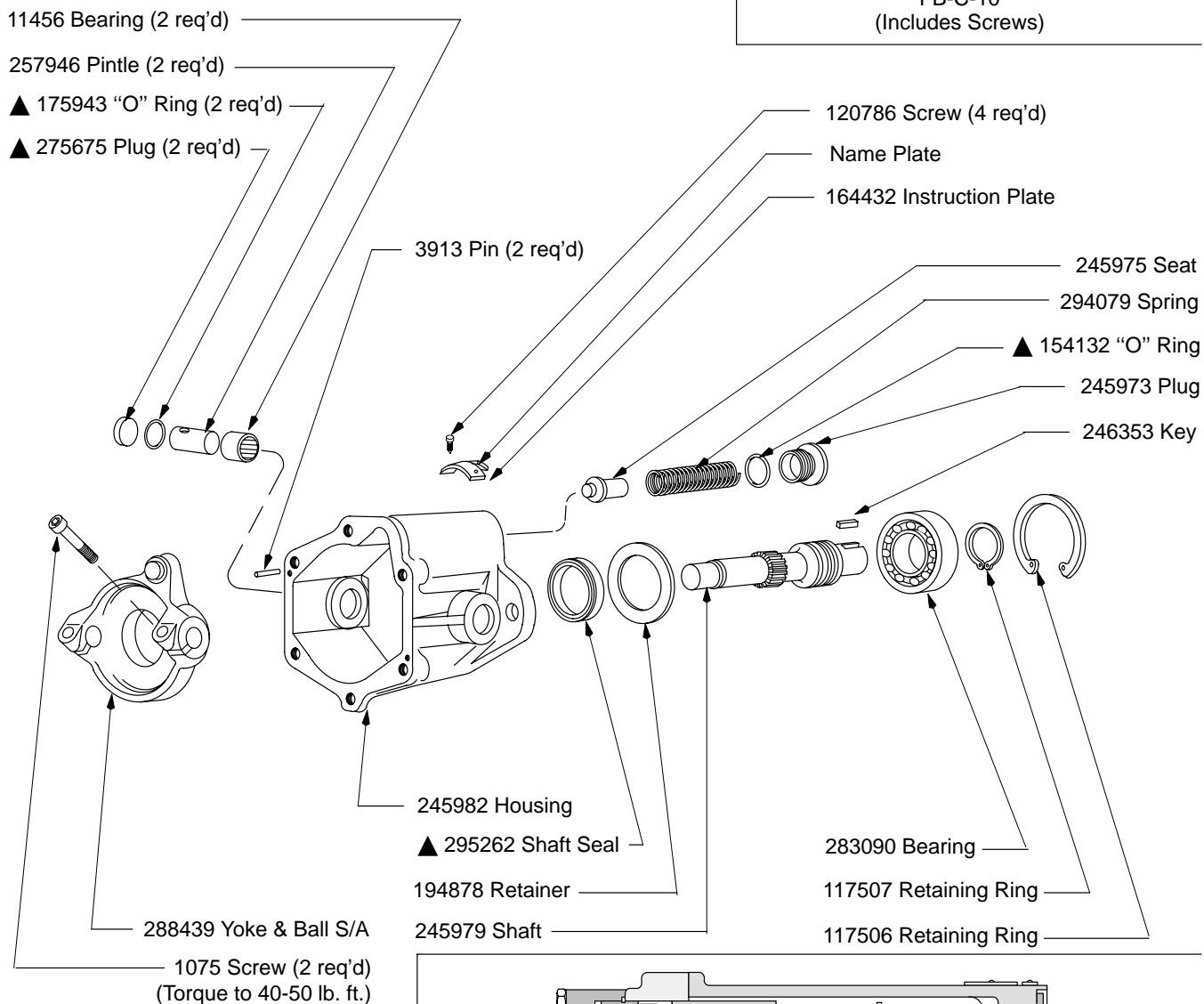
I-3275-S



MODEL	RETAINING RING	WASHER	SPRING	WASHER	CYLINDER BLOCK	ROTATING GROUP KIT
	— THESE PARTS ARE INCLUDED IN ROTATING GROUP KIT —					
PVB20-(F)LS-10-D-10	194025	244931	246386	238780	250688	938280
PVB20-(F)RS-10-D-10			263582		259458	938290
PVB29-(F)LS-10-D-10						
PVB29-(F)RS-10-D-10						



MODEL	PIN (3 REQ'D)	WASHER	WASHER	PLATE	PISTON & SHOE PLATE	SWASH PLATE	ROTATING GROUP KIT
	— THESE PARTS ARE INCLUDED IN ROTATING GROUP KIT —						
PVB20-(F)LS-10-D-10	248835	238836	283993	248609	941883	239335	938280
PVB20-(F)RS-10-D-10					941888		938290
PVB29-(F)LS-10-D-10							
PVB29-(F)RS-10-D-10							



Model Code

PV	2*	-(F)	*	S	10	-D	10
<input type="text"/>	<input type="text"/>	<input type="text"/>	<input type="text"/>	<input type="text"/>	<input type="text"/>	<input type="text"/>	<input type="text"/>
B							
<input type="text"/>	<input type="text"/>	<input type="text"/>	<input type="text"/>	<input type="text"/>	<input type="text"/>	<input type="text"/>	<input type="text"/>
1	2	3	4	5	6	7	8

1 Model

Pump, variable displacement, inline design

2

Flow rating @ 1800 rpm

20 - 20 USgpm

29 - 29 USgpm

3 Mounting

Foot bracket
(Omit for flange mount)

4 Rotation

Viewing from shaft end

R - Right hand (CW)

L - Left hand (CCW)

5 Swash Plate Movement

One side of center

7 Pump Design

6

Control Type

Control stem servo

8 Control Design Number

For satisfactory service life of these components, use full flow filtration to provide fluid which meets ISO cleanliness code 16/13 or cleaner. Selections from pressure, return, and in-line filter series are recommended.

Printed in U.S.A.